

# EXCHANGE AND SUMMER PROGRAMMES

## UNDERGRADUATE & POSTGRADUATE



RENNES  
SCHOOL  
OF BUSINESS

UNFRAMED THINKING

# SUMMARY

<b>FOREWORD</b>	<b>3</b>
<b>RENNES: AN IDEAL LOCATION</b>	<b>4</b>
<b>AN INTERNATIONAL CAMPUS IMMERSED IN THE WORLD</b>	<b>6</b>
<b>CHOOSE YOUR PROGRAMME</b>	<b>8</b>
<b>ACADEMIC INFORMATION</b>	<b>10</b>
<b>SUMMER PROGRAMMES</b>	<b>12</b>
<b>LIFE AT RENNES SB: A UNIQUE EXPERIENCE</b>	<b>14</b>
<b>INTERNATIONAL STUDENTS: OVERALL WELCOME SERVICES</b>	<b>16</b>
<b>HOW TO PREPARE YOUR EXCHANGE</b>	<b>18</b>



# FOREWORD

“ *With the pace of business and societal changes becoming ever more complex, faster and spanning borders, business leaders must thrive in an ever-changing environment.*

*Old methods of thinking are no longer suited to the challenges of tomorrow, so, at Rennes School of Business we believe that education is the key to helping students step out of existing frameworks.*

*With 95% of faculty members and 55% of students coming from outside of France\*, Rennes School of Business brings the world to our students by opening their minds towards other cultures. Our mission: to allow students to think beyond the framework by living a unique and international experience*

*that will stay with them forever and turn education into a true exchange.*

*Thinking beyond the framework is about standing out from the rest, working differently, discovering new fields and anticipating tomorrow's challenges to make way for a better and more innovative future.*

*The quality of our processes, faculty, research and programmes has been endorsed by the leading international accreditation organisations. Rennes School of Business is one of less than 1% of Business Schools in the world to hold EQUIS, AACSB and AMBA "triple crown" accreditation status. This guarantee of quality is our promise to our students and partners.*

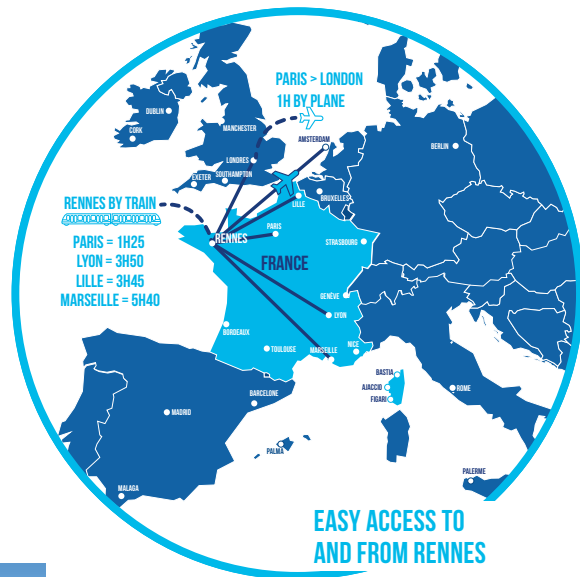
*I look forward to welcoming you to Rennes School of Business. ”*



**THOMAS FROEHLICHER**  
RENNES SCHOOL OF BUSINESS DEAN

\*This figure represents the ratio of international students on the Rennes campus to the population present, and is one element of the effective multicultural experience.

# RENNES: AN IDEAL LOCATION



Rennes is a vibrant, beautiful city steeped in history and filled with ancient, medieval architecture juxtaposed by modern amenities. It is clearly a student city: the total population of Rennes (426 500 people) includes 70 000 students. Officially ranked by the national press, it is constantly developing and expanding.

Rennes School of Business is located in Rennes, the capital and largest city of the Brittany region of France. Students can take advantage of this central location which allows for quick access to nearby destinations: in only 55 minutes one can breathe in fresh sea air; the city of lights, Paris, is just 1h25mn by train; and it's possible to fly to lovely London in just 1 hour!



Ranked number 2, amongst the best cities to live in France (HelloWork 2022)

Ranked number 2, amongst the best cities to study in France, out of 43 (L'Étudiant, 2021-2022)



## WHY RENNES SCHOOL OF BUSINESS

Rennes School of Business, founded in 1990, is considered to be the most international School of Management in France. With its cosmopolitan environment, classes taught entirely in English and a network of more than 350 partner universities worldwide, Rennes School of Business gives you a unique opportunity to study in an international environment.

Inventing the future starts with looking at the present differently. At Rennes School of Business we believe that students also have knowledge which they can bring to their education, that students can learn and strive differently, that learning is an endless process!

## RENNES SCHOOL OF BUSINESS PREPARES ITS FUTURE GRADUATES FOR THE WORLD OF TOMORROW



### FACULTY

- 100** permanent professors, of whom 95% are non-French
- 40** different nationalities
- 5** research centres
- 2** pedagogical chairs
- 1** research chair



### SCHOOL

- 26** multicultural associations for students
- 90** nationalities on campus
- 3** international accreditations: AACSB, AMBA and EQUIS



### STUDENTS

- 5,000** students on campus (55% from outside of France)
- 72%** of our graduates are employed in a position with an international dimension
- 91%** satisfaction rate for the choice of partner university
- 89%** of graduates recommend their friends to study at Rennes SB
- 90%** of graduates are employed less than 6 months after graduation

# AN INTERNATIONAL CAMPUS IMMERSSED IN THE WORLD



**90** nationalities

**350+** main partner universities

**100%** courses in English alongside with French and international students



## THE ANNUAL INTERNATIONAL FAIR AT RENNES SB

- Feedback from our outgoing students on their international experience (culture, way of life...)
- Presentation of partner universities by foreign students
- Introduction to different cultures by the Well'Come student association

## RENNES SCHOOL OF BUSINESS: ONE OF THE BEST BUSINESS SCHOOLS IN THE WORLD!

### RANKINGS

#### NATIONAL RANKINGS

<b>LE MOCI</b> PGE Ranking 2021	<b>1</b>	<b>Le Point</b> PGE Multicultural environment Ranking 2021	<b>3</b>
<b>LE MOCI</b> Bachelor Ranking 2021	<b>2</b>	<b>Le Point</b> PGE International performance Ranking 2020	<b>4</b>
<b>la Tribune</b> Bachelor in Management Ranking 2022	<b>2</b>	<b>l'Éudiant</b> PGE International performance Ranking 2020	<b>5</b>
<b>la Tribune</b> PGE International Ranking 2022 <small>Professeurs internationaux Nombre de pays proposés en échange</small>	<b>2</b>	<b>la Tribune</b> PGE Ranking 2022 <small>Post "classe préparatoire" business schools</small>	<b>10</b>
<b>l'Éudiant</b> Bachelor in Management Ranking 2022	<b>3</b>	<b>l'Éudiant</b> PGE Ranking 2020 <small>Post "classe préparatoire" business schools</small>	<b>10</b>

#### INTERNATIONAL RANKINGS

<b>U-Multirank</b> 2021	<b>9</b>
<b>Shanghai Ranking's Global Ranking of Academic Subjects</b> 2019 Management among French Business Schools	<b>23</b>
<b>FT</b> Master in Finance Ranking 2022	<b>48</b>
<b>QS</b> World University Rankings Executive MBA Ranking 2020	<b>88</b>
<b>FT</b> European Business Schools Ranking 2021	<b>97</b>
<b>FT</b> Executive MBA Ranking 2019	



### TRIPLE-CROWN ACCREDITED



This triple accreditation is shared with less than 1% of other Business Schools worldwide.

# CHOOSE YOUR PROGRAMME



All our Exchange Programmes

Rennes School of Business welcomes international exchange students from all over the world. Exchange students may register for classes either on transfer credit or on a double degree at under or postgraduate level according to the agreement between their home institution and Rennes School of Business and depending on the level of their studies.

## COURSE SELECTION

Students will be contacted in order to choose their courses by email 2 to 3 months before the start of the programme in order to make their choice of courses.

Exchange students usually register for about 30 ECTS credits, and may opt for French classes in addition to the business modules offered in each programme.

Double degree seeking students must follow Rennes SB's specific programme requirements.

**NEW**

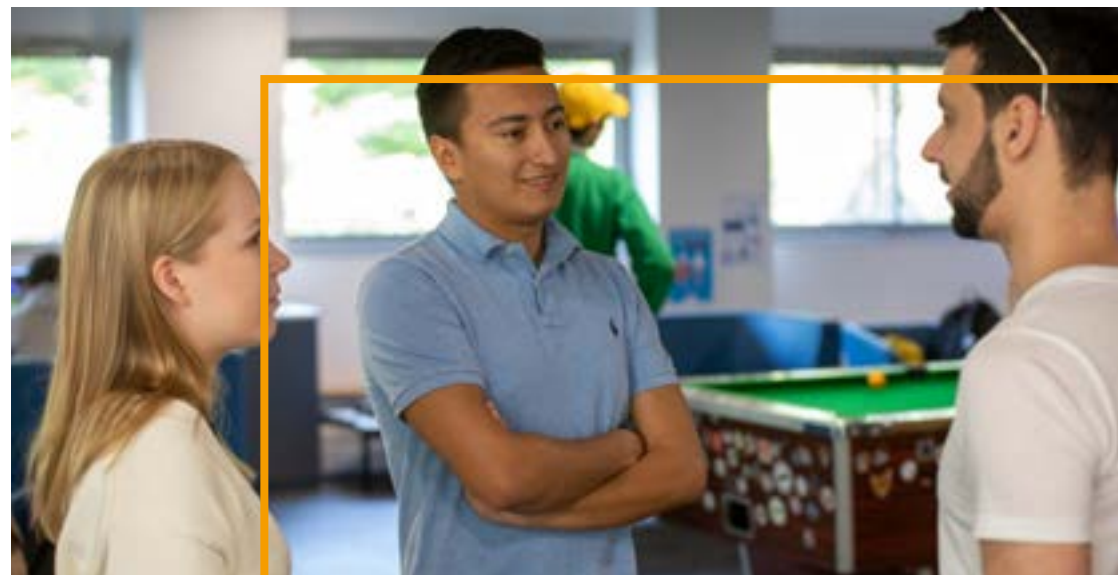
**LEVEL 2** (Undergraduate - Fall Semester only) > 4 ECTS/ course, business modules in various fields.

**LEVEL 3** (Undergraduate) > 4 ECTS/course, tracks available in Sales and Marketing, Finance and Banking, Purchasing and Supply Chain.

**LEVEL 4** (Advanced Undergraduate) > 5 ECTS/course, free choice of courses among a variety of business courses in different fields.

**LEVEL 5** (Postgraduate) > 6 ECTS/course, choose one specialised MSc: Finance, Marketing, Human Resource Management, Innovation Management, Supply Chain Management.

**FOR ALL PROGRAMMES**, optional French language and French culture courses are available.



## A MULTICULTURAL FACULTY

The cultural diversity represented by the Faculty at Rennes School of Business, along with their academic and professional track record, are of direct benefit to students, providing the global environment that mirrors the reality in which companies operate today. Beyond their involvement in the five core academic disciplines (Marketing; Supply Chain Management & Information Systems; Strategy & Innovation; Finance & Accounting; and Management & Organisation). Faculty members showcase their research and expertise within the Rennes SB Research centres: Rethinking tomorrow's organisation (RTO); AI-driven Business; Agribusiness; Green, Digital, & Demand-Driven Supply Chain Management (G3D); Financial market & corporate outcomes (FMCO). Course modules are developed in a transversal fashion, providing students with a unique opportunity to approach key management topics from different cultural, functional, and disciplinary perspectives.

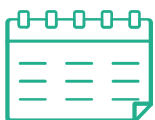


# ACADEMIC INFORMATION



## ADMISSION PROCEDURE

- Fully completed application form signed by the candidate and the Home University.
- Official transcripts for the entire education of the student at the Home University (translated into English if the transcripts are not in English, French, German, Spanish or Italian).
- CV (in English).
- Statement of purpose (in English) for double degree seeking students only.



## ACADEMIC CALENDAR

### Fall semester (all levels):

Beginning of September - End of December

### Spring semester:

- Level 4 and level 5: Beginning of January - End of April
- Level 3 and double degree BiM: End of January - Beginning of May



## NOMINATION DEADLINES

**Fall semester:** 10 May

**Spring semester:** 10 October

## APPLICATION DEADLINES

**Fall semester:** 20 May

**Spring semester:** 20 October



## GRADING SYSTEM

ECTS Grades	Grade Point	Rennes School of Business Grades
A Excellent	5	70% or above
B Very Good	4	65% to 69%
C Good	3	58% to 64%
D Satisfactory	2	50% to 57%
E Sufficient	1	40% to 49%
Fx Fail	-	30% to 39%
F Fail	-	Below 30%

## TEACHING METHODS

Students are given a detailed outline at the beginning of each course (not available beforehand) where the professors provide learning objectives and outcomes, course description and main topics covered, teaching methods and bibliography, method of assessment. The final examination is worth 60-70% of the total mark. The remaining is assessed on individual and/or group presentations, quizzes, case studies, etc. The final examinations always take place during the last 2 or 3 weeks of the semester and are compulsory for all students.

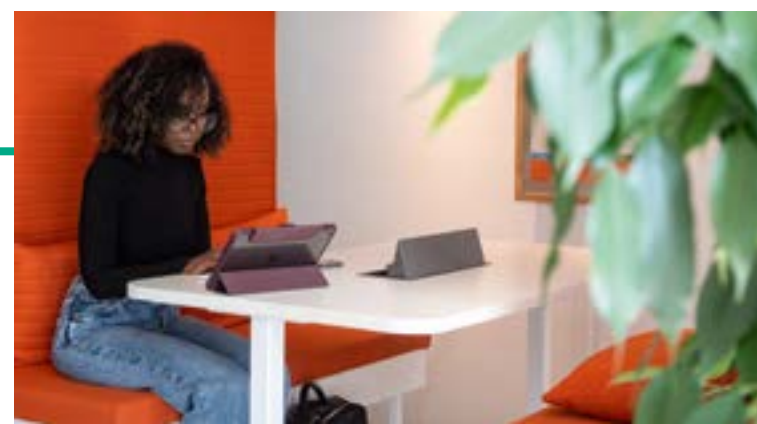
## LANGUAGE REQUIREMENTS

### STUDENTS ON TRANSFER OF CREDITS:

A B2 level in English - (or equivalent TOEFL iBT/TOEIC/IELTS). All classes are conducted in English, therefore students are expected to have a sufficient command of the English language to be capable of understanding, making oral presentations, writing reports and exams.

### STUDENTS ON DOUBLE DEGREE:

English language test required (except for native English speakers): TOEFL IBT 80, TOEIC 785, IELTS 6.5



# SUMMER PROGRAMMES



This way for the summer programmes

## SUSTAINABLE BUSINESS

June

**(27 hours - 6 ECTS credits):**

The purpose of the programme is to provide students with a conceptual framework and practical ideas for understanding how organisations and managers can optimize economic, social and environmental performance through a successful Corporate Social Responsibility strategy. It will examine how responsible managers and their company stakeholders can work together to create a more sustainable world.

## CROSS-CULTURAL MANAGEMENT

June

**(27 hours - 6 ECTS credits):**

The focus of this module is on Cross-Cultural Management. It deals with three main goals: get an overview of today's global business environment; know the cross-cultural framework references and learn how to manage a cross-cultural team.

## ARTIFICIAL INTELLIGENCE

**FEE PAYING PROGRAMME**

May

**(30 contact hours - 3 ECTS credits/module):**

4 independent courses available for this programme. Data science for Business, AI Business Intelligence, Business Textual Learning and Business Network Intelligence. Students can choose to take one or several modules.



## DOING BUSINESS IN EUROPE

June

**(30 hours - 6 ECTS credits - groups only):**

The purpose of this programme is to provide practical ideas about doing business in Europe especially in the context of Brexit. It deals with commercial challenges in Europe related to legalities, financial markets and economic practices.



## YOUR DEDICATED SUMMER PROGRAMMES CONTACT



**LAURA MEUNIER**

SUMMER PROGRAMMES & PARTNER UNIVERSITY OFFICER

summer.programmes@rennes-sb.com

Tel.: +33 (0)2 99 54 63 63

www.rennes-sb.com

# LIFE AT RENNES SB: A UNIQUE EXPERIENCE

## RENNES SB CAMPUS, A FIRST CLASS LIVING ENVIRONMENT

Situated in the city of Rennes, 10 minutes from Rennes' historic centre, accessible 24 hours a day, 6 days a week, the Rennes School of Business campus offers an ideal working environment for the educational requirements and lives of its students:



- 1 ONLINE HOUSING PLATFORM
- LECTURE THEATRES, WITH 50 TO 400 SEATS
- 1 OFFICE FOR EACH OF THE STUDENT ASSOCIATIONS
- 1 LANGUAGE RESOURCE CENTRE



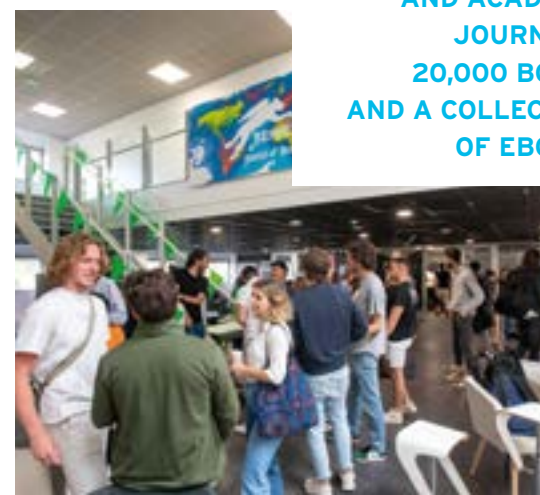
- 27 000 M<sup>2</sup> AND 4 BUILDINGS
- A BLOOMBERG TRADING ROOM
- A BUSINESS INCUBATOR
- AN INNOLOUNGE (INNOVATION SPACE)
- A CENTRAL AVENUE, "LA RUE DES ENTREPRENEURS", ENTIRELY FOR STUDENTS



- 1 MULTIMEDIA RESOURCE CENTRE: MORE THAN 10,000 PRESS PUBLICATIONS AND ACADEMIC JOURNALS, 20,000 BOOKS AND A COLLECTION OF EBOOKS



- SPORTS AND TRAINING ROOMS
- 1 OUTDOOR SPORTS FIELD
- 1 STUDENT LOUNGE
- 1 MUSIC STUDIO
- 1 LARGE CAFETERIA
- 1 SNACK BAR





# INTERNATIONAL STUDENTS: OVERALL WELCOME SERVICES

**The international student office //** assists students and helps them to find accommodation and to manage administrative formalities.

**Well'Come //** (the international student association) helps international students integrate school and life in Rennes. Not only does it pick them up at the station or airport on their arrival, it also organises tourist trips (Mont St. Michel, Paris, etc.) and sports events.

**Aloha Camp //** The school organises an Aloha camp for all international students upon their arrival in September. Students will have the opportunity to finalise their administrative enrolment and find a wide range of services in one place: healthcare, residence permits, banking, internet providers, mobile phones, bus passes, etc.

**Other special welcome events //** Campus Game, to discover the school, its staff, its faculty and facilities. Campus Festival, to meet the Rennes School of Business community through music and sports events.



**ARE YOU READY FOR UNLIMITED IMPACT? GET INVOLVED!**

Active participation by the students in the life of the school



Student well-being

## STUDENT CARE

At Rennes SB, we are convinced that in order to find their way, our students must begin by feeling good about their daily lives and their studies.

The 3 pillars of our Feel Good initiative are designed to help us reach this objective:

- Well-being and health
- Ethics
- Diversity and inclusion



By reinventing the student experience, the Feel Good team provides excellent services that contribute to making Rennes SB a great place to learn for all, by:

- Fostering an authentic culture of student care with high quality services;
- Boosting team spirit and empowering students with inspiring learning opportunities;
- Upgrading campus life with thrilling events for students that promote the mixing of different cultures.

## RENNES SCHOOL OF BUSINESS ALUMNI, A STRONG INTERNATIONAL NETWORK

Being part of the Alumni community and getting the most out of a valuable network will boost your career throughout your professional life. Belonging to the Rennes School of Business Alumni network opens the door to:

### 100 EVENTS ORGANISED

every year (conferences, advice, executive guest speakers, "theme-based workshops")

More than

### 25,000 MEMBERS

(French & international) across 100 countries

More than

### 2,000 JOB VACANCIES

(and alumni internships) posted in 2021



Take a look at [rennes-sb-alumni.com](https://rennes-sb-alumni.com)



# HOW TO PREPARE YOUR EXCHANGE

## USEFUL FRENCH WORDS



## ORIENTATION PROGRAMME

The School provides an orientation programme for all international students the week before classes start. Sessions are compulsory and cover application for residence permit, health insurance, banking, internet provider, mobile phones, bus pass and information sessions on French culture, academic expectations and standards.

## VISA FOR NON-EUROPEAN STUDENTS

Please contact the local French Embassy or Campus France in your country to obtain a visa application to arrange your stay in France as soon as you are admitted.

<https://www.campusfrance.org/en>

## RESIDENT PERMIT

The international office of Rennes School of Business helps students to obtain a resident permit.

## HEALTH INSURANCE

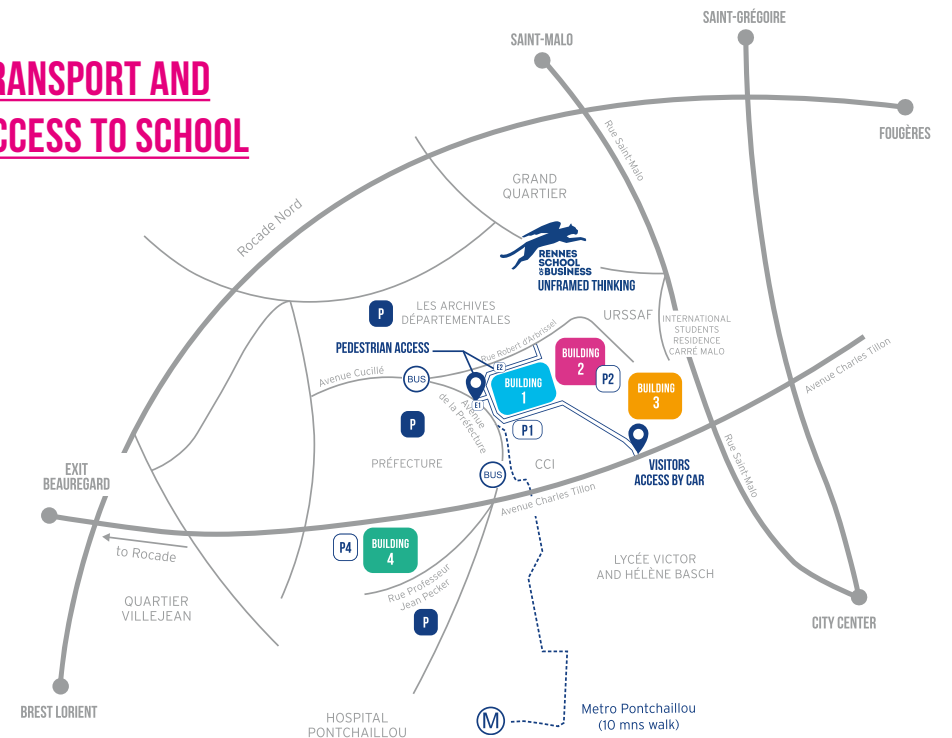
The French social security system is mandatory, but free of charge for any Rennes School of Business student. To be covered medically during the first three months, the school strongly advises students to take out a private social security insurance contract in their home country.

## ACCOMMODATION

Students may consult the Rennes SB' online accommodation platform for housing, both in France and abroad. You will find many offers located near the campus from private landlords, residence halls and real estate agencies on the platform: <https://rennes-sb.studapart.com/en/>

You can make your reservation request directly on the platform. The accommodation team will send you the enrolment key allowing you to login on the platform once you will have enrolled at Rennes SB. If you have any questions, do not hesitate to contact the platform team via the online Chat.

## TRANSPORT AND ACCESS TO SCHOOL



### PUBLIC TRANSPORTATION

#### From the Airport:

- BUS 67 from Air Libre Aéroport
- Stop at station République (city center)
- Connexion with Métro or Bus

#### From city center/Railway station:

- Métro direction Kennedy
- Stop at station Pontchaillou
- 10 mns walking distance to school
- or
- Bus City station République
- Direction Grand Quartier
- Stop at station Préfecture (Rennes)

### ACCESS

- Pedestrian accesses: 2, Rue Robert d'Abrissel or Avenue de la Préfecture
- Parking visitors (P1) 6, avenue Charles Tillon
- Other free parking places (see map)

- P1 Visitors Parking
- P2 Students Parking
- P4 Administration Parking
- P Free parking
- BUS BUS Stop - Préfecture (Rennes)

## YOUR DEDICATED EXCHANGE PROGRAMMES CONTACT



**ÉLODIE SAINT-YVES**  
INTERNATIONAL MOBILITY DIRECTOR  
exchange@rennes-sb.com  
Tel.: +33 (0)2 99 54 63 63  
www.rennes-sb.com

## CONTACTEZ-NOUS

exchange@rennes-sb.com  
Tél. : 02 99 54 63 63  
rennes-sb.com

**Rennes School of Business**  
2, rue Robert-d'Abrissel 35065 Rennes  
9, rue d'Athènes 75009 Paris

- linkedin.com/school/rennessb
- facebook.com/RennesSB
- instagram.com/rennes\_sb
- twitter.com/rennessb
- rennes-sb.com
- exchange@rennes-sb.com

**AT  
RENNES SB,  
THE HARDEST  
DECISION  
IS KNOWING  
WHICH  
LANGUAGE  
TO USE!**



**UNFRAMED THINKING**

